

# THEOS GLASS MINI SR/100



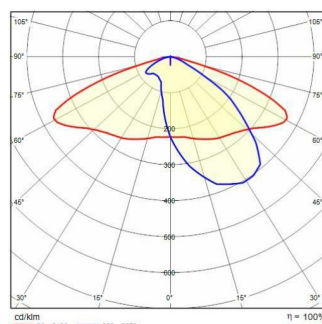
<b>Part number</b>	3105197
<b>Lampholder:</b>	LED
<b>Light Source:</b>	LED
<b>Wattage:</b>	46 W
<b>Finish:</b>	AN-96 / Anthracite gray / Textured
<b>Insulation class:</b>	II
<b>Degree of protection:</b>	IP66
<b>IK-J-xxIP:</b>	IK08 6J xx5
<b>CRI:</b>	70
<b>Kelvin:</b>	3000
<b>Power factor:</b>	$\text{COS}\phi \geq 0,9$
<b>Optic:</b>	Road reflector
<b>Lightsource lumen output:</b>	7044 lm
<b>Luminaire lumen output:</b>	6369 lm
<b>L:</b>	L90
<b>B:</b>	B10
<b>Lifetime:</b>	100000 h
<b>Ta MIN luminaire:</b>	-40°
<b>Ta MAX luminaire:</b>	55°
<b>ULR:</b>	0%
<b>IPEA* (Street Lighting):</b>	A7+
<b>IPEA* (Area Lighting):</b>	A8+
<b>IPEA* (Cycle/Pedestrian Lighting):</b>	A7+
<b>IPEA* (Green Areas):</b>	A7+
<b>IPEA* (Historical Areas):</b>	A12+
<b>Luminous Intensity Class:</b>	G*4



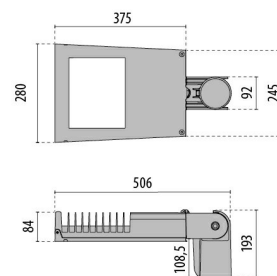
## Description

- Series of LED road lighting luminaires, in two versions, comprising:
- Die-cast aluminium housing chemically pre-treated and painted with polyester powder coating
  - Die-cast aluminium trim ring, polyester-powder painted after chemical surface treatment, fully integrated and hinged to the housing
  - Painted die-cast aluminium pole-mounting joint for pole  $\varnothing$  60 mm or 76 mm
  - High-transparency polycarbonate lenses for best light transmission
  - The "SECURE LIGHT DISTRIBUTION" system guarantees uniform light distribution even in the remote case of LED failures
  - High resiliency anti-ageing silicone gasket with high elastic return capacity
  - Flat extra clear tempered glass diffuser
  - Automatic line isolator switch that cuts off power supply when ring is opened
  - High efficiency electronic driver
  - Complete with supplementary device for protection against network surges of up to 10 kV (DM)
  - Stainless steel external screws
  - Complete with 1 meter H07RN-F 2x1.5 mm<sup>2</sup> or H07RN-F 4x1.5 mm<sup>2</sup> cable for dimmable versions, which allows connection to the network without opening the luminaire
  - Optics available depending on the models: SR/075 for narrow roads with an L/H ratio (road width/pole height) between 0.5 and 0.75; SR/100 for two-lane roads and L/H ratio equal to 1; SR/125 for wide roads and L/H ratio equal to 1.25; SR/150 for wide roads and

## Photometric data



## Technical drawings

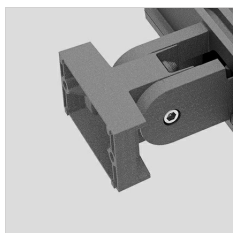


L/H ratio equal to 1.5

- Compliant with the UNI 10819 Standard and with the Italian regional laws on light pollution
- Consult factory for other colour temperatures and colour rendering index
- Consult factory for 7-pin NEMA socket options for external control systems connection.
- CLO (Constant light output) option available. Consult Factory
- Photometric data measure according to UNI EN 13032-4 and IES LM-79-08

## OPTIONAL ACCESSORIES

### THEOS GLASS



14174796  
Wall mount bracket THEOS  
Anthracite gray



14077796  
Hot-dipped galvanized wall angled  
steel bracket, cataphoresis and  
polyester powder  
Anthracite gray